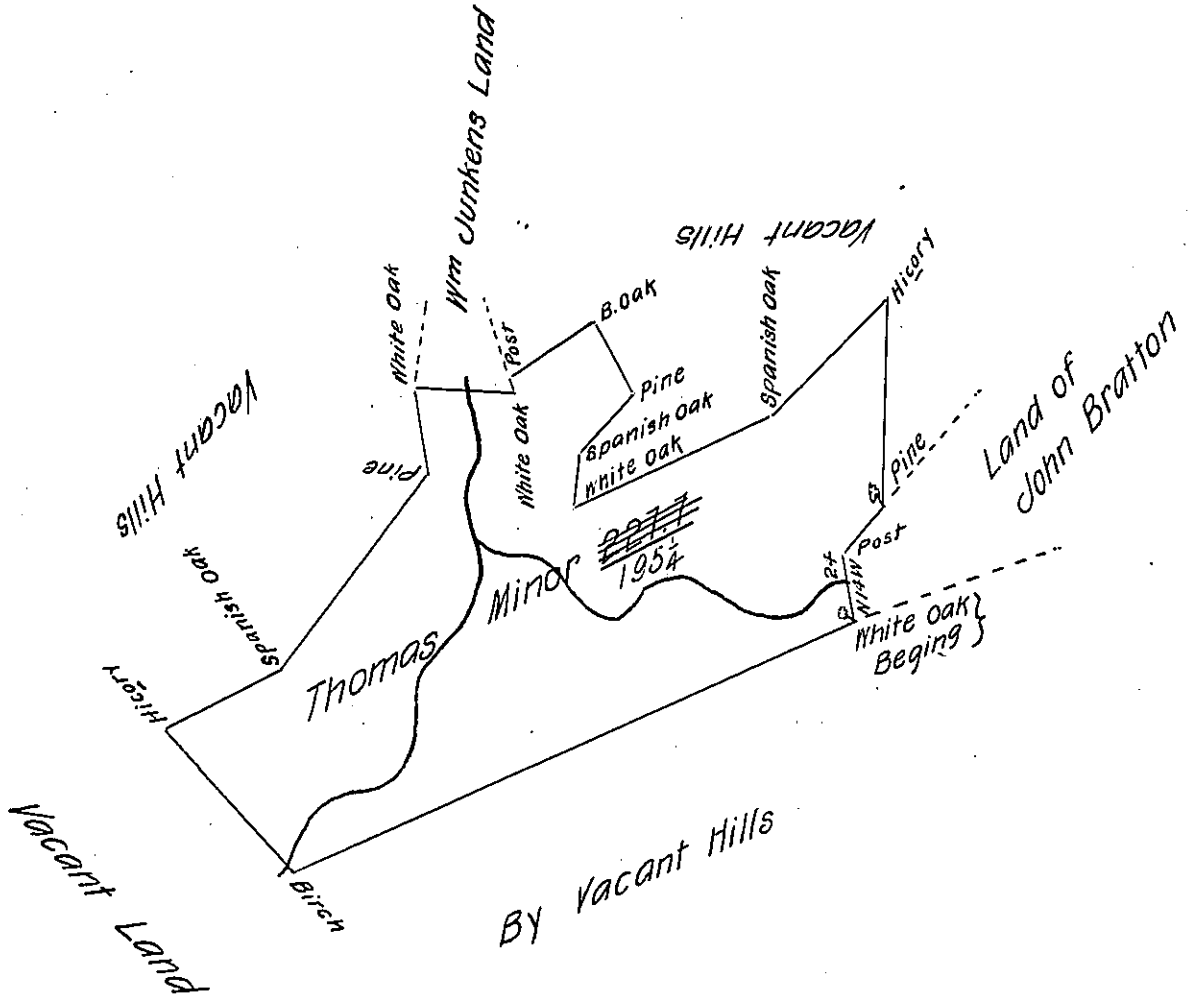


*Courses and Distances  
Beginning White Oak*

- N 14 W 24 Post
- N 36 E 23 Pine
- N 2 W 84 Hickory
- S 41 W 70 Spanish Oak
- S 62 W 96 White Oak
- N 3 E 26 Spanish Oak
- N 40 E 33 Pine
- N 31 W 32 Black Oak
- S 54 W 44 Post
- S 30 E 2 White Oak
- S 85 W 43 White Oak
- S 13 E 36 Pine
- S 35 W 106 Spanish Oak
- S 60 W 56 Hickory
- S 46 E 8 1/2 Birch
- N 61 E 271 to Begin



The Draught of a Tract of land called \_\_\_\_\_ on the North side  
of Juniata - above the long Narrows in Cumberland County containing <sup>one</sup> ~~five~~  
<sup>ninety five</sup>  
Hundred ~~Twenty seven~~ Acres 144 Perches with the usual allowance of six  
Acres P. Cent for Roads. Survey'd the 4<sup>th</sup> day of July Anno Dom 1769.  
In Pursuance of an Order of Survey to Thomas Minor Bearing date at  
Philada the 15<sup>th</sup> day of June Anno Dom 1767 No 3859.

P- Wm Maclay D.S.

To John Lukens Esq S.G.  
of Pennsylvania.

IN TESTIMONY that the above is a copy of the original remaining on file in  
the Department of Internal Affairs of Pennsylvania, made  
conformably to an Act of Assembly approved the 16th day of  
February, 1833, I have hereunto set my Hand and caused  
the Seal of said Department to be affixed at Harrisburg,  
this eleventh day of May 1905.

*Asa N. Johnson*  
Secretary of Internal Affairs.